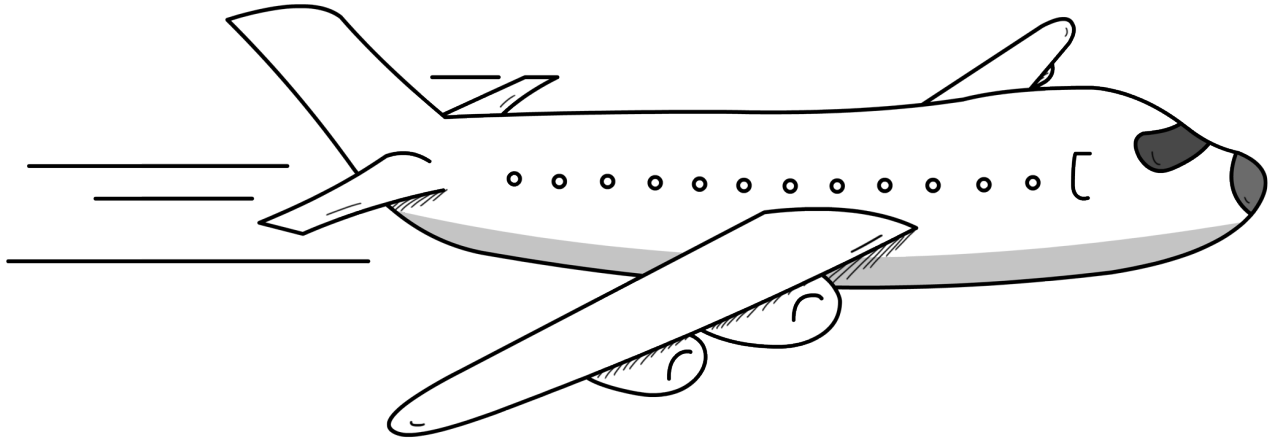


Οριζόντιες γραμμές

Πάτησε με το μολύβι σου πάνω στις τελείες και σχημάτισε γραμμές.



Tracing practice area consisting of multiple sets of horizontal lines. Each set includes a solid top line, a solid bottom line, and a dashed middle line. The first two sets include arrows pointing to the right, indicating the direction of the stroke. The first set also includes a row of dots along the dashed line to guide the student's hand.